

# ANHUI PROVINCE

Area: 139,600 sq km

Population: 64.1 million

Longitude: 114°43'-119°38' E Latitude: 29°25'-34°39' N

Location: southeast China

Climate: Anhui, located in the transitional region from the warm temperate to the subtropical zone, is generally warm and humid with four distinctive seasons.

- Average annual temperature: 14°C-17°C
- Annual sunshine: 1,800-2,500 hours
- Annual precipitation: 800-1,800 mm
- Annual frost-free period: 200-250 days

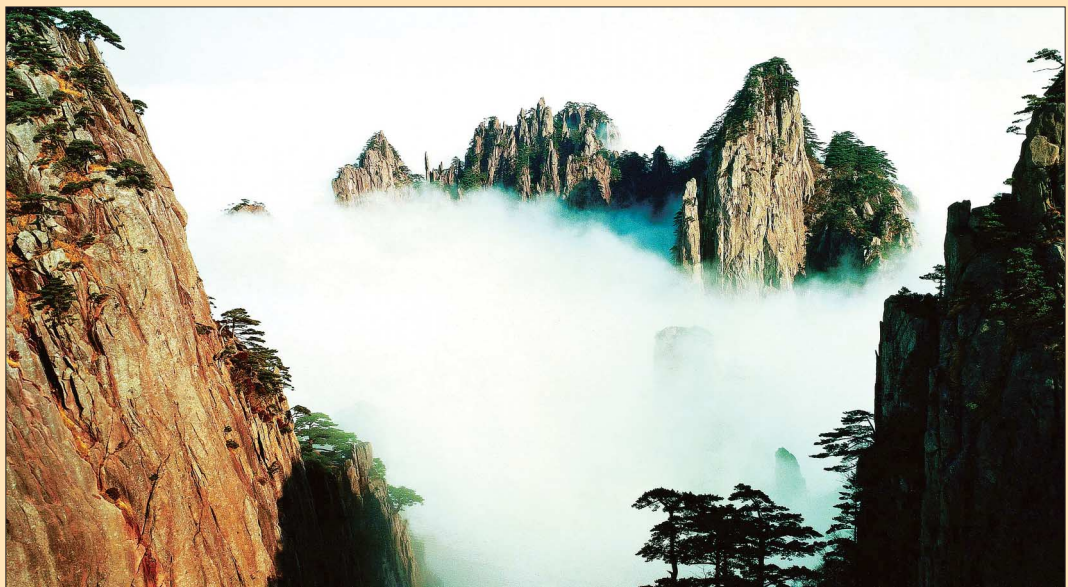
Topography :

- The Huaihe and Yangtze Rivers flow through the entire province from west to east, dividing it into three parts
- Vast and smooth northern part forms part of the North China Plain
- Mountainous and hilly middle and southern part

Anhui is one of the provinces mostly endowed with rich tourism resources. It has five national scenic spots, namely Huangshan, Jiuhuashan, Tianzhushan,

C

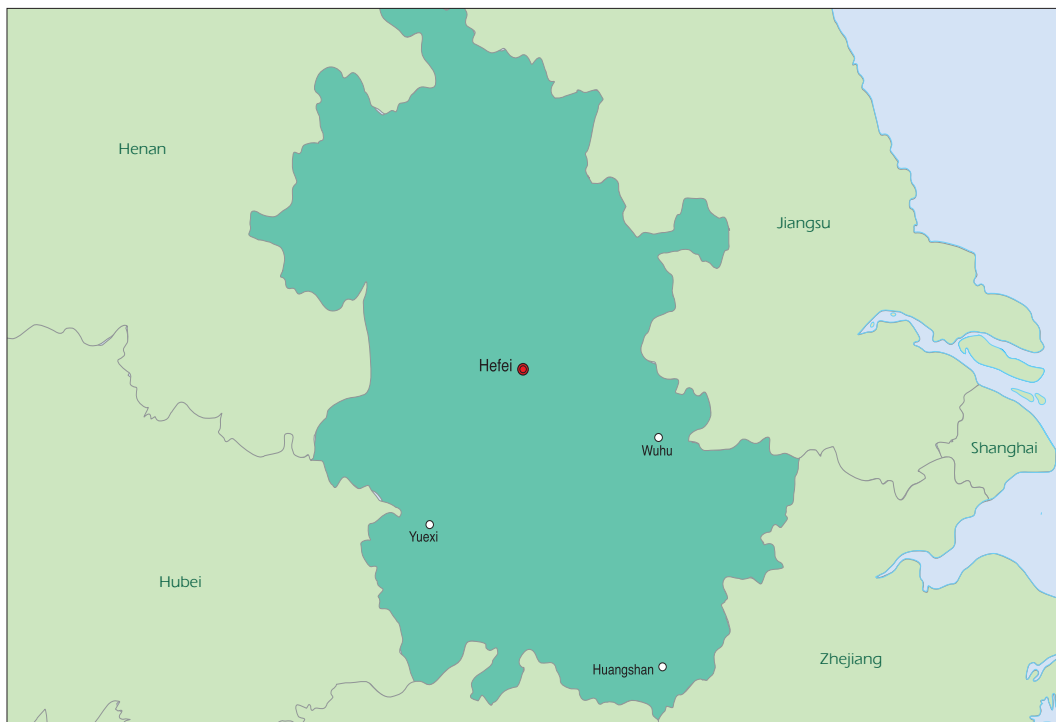
232



Picturesque Huangshan Mountain



Langyashan and Qiyunshan, as well as three state nature reserves, 23 state forest parks, and three famous ancient cities-Bozhou, Shouxian and Shexian. Its nine key state protected cultural sites include the ruins of Ming Tombs and the opera building in Bozhou. In 1999, Huangshan received an award from the UNESCO for its outstanding protection and management. The ancient villages Xidi and Hongcun in south Anhui have been inscribed on the World Cultural Heritage List.



## HEFEI

Area: 7,266 sq km

Population: 4.6 million

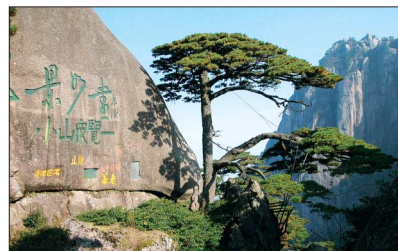
Longitude: 116°40'-117°52'E Latitude: 31°30'- 32°37'N

Location: Central part of Anhui Province

Climate: Subtropical humid monsoon climate.

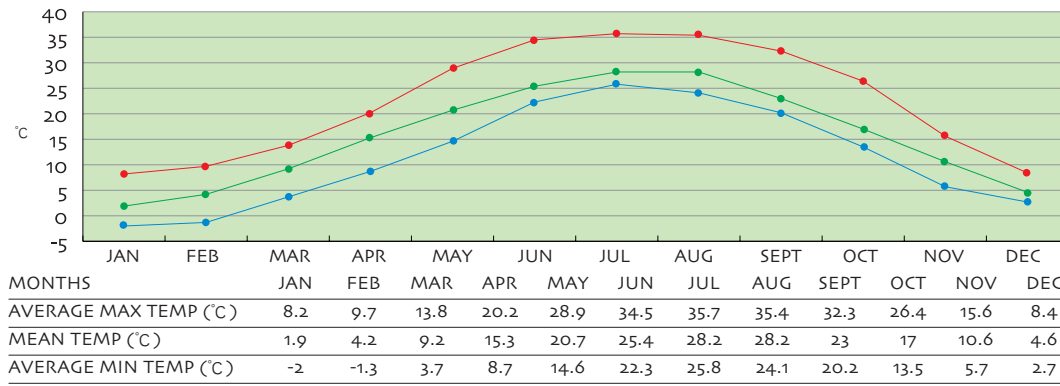
- Average annual temperature: 15.7°C
- Annual sunshine: 2,163 hours
- Annual precipitation: 998.4 mm

The capital of Anhui Province, Hefei has convenient air, railway and highway transportation networks. The Luogang Airport is a modern international airport, having 40 plus international and domestic air routes.

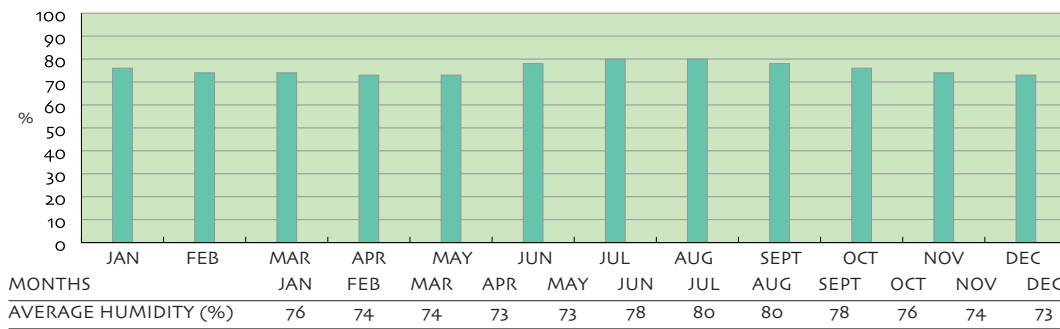


Guest-Welcoming Pine of the Huangshan Mountain

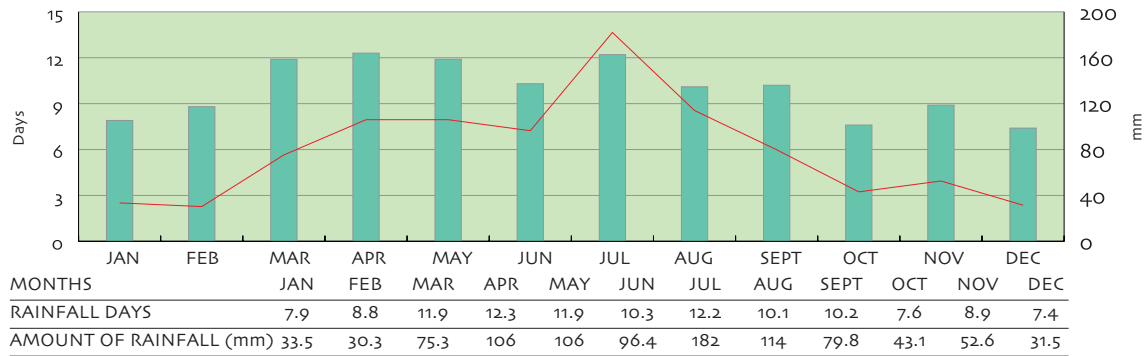
● AVERAGE MAX TEMP ● MEAN MONTHLY TEMP ● AVERAGE MIN TEMP



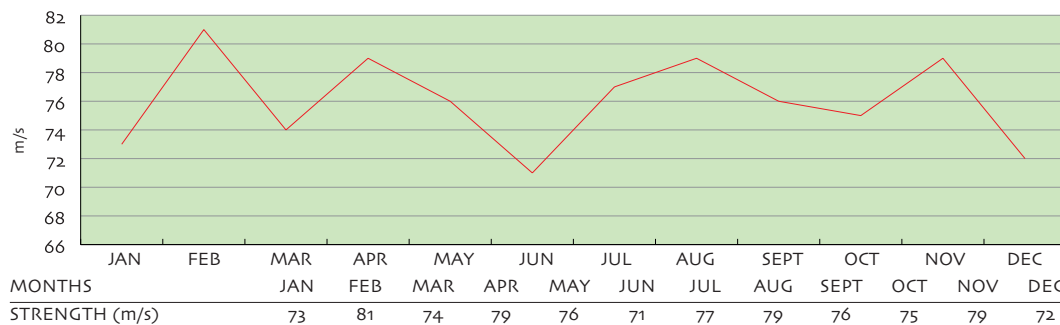
● HUMIDITY



● RAINFALL DAYS ● AMOUNT OF RAINFALL



● PREVAILING WIND DIRECTION AND AVERAGE STRENGTH



## Anhui Provincial Gymnasium

Facility for: Handball, table tennis and fencing

Facility description:

- One 45m x 25m standard handball court
- One 45m x 21m table tennis hall of 20 tables
- One 45m x 20m fencing hall of 7 pistes
- Weight training room, changing rooms and toilets

## Anhui Gymnasium

Facility for: Volleyball, handball, table tennis and badminton

Facility description:

- 45m x 31m
- Weight training room, changing rooms and toilets

# C

236

## HUANGSHAN

---

Area: 9,807 sq km

Population: 1.47 million

Longitude: 118°1'E Latitude: 30°1'N

Location: In the southern part of Anhui Province

Climate:

Humid monsoon climate.

- Average annual temperature: 15°C-16°C
- Annual precipitation: 1,600 mm
- Annual frost-free period: 236 days

The Huangshan Mountain, like the Yangtze River, the Great Wall and the Yellow River, is a symbol of the Chinese nation. The world-renowned Huangshan Scenic Area is 50 km from downtown area. Its convenient air routes and railway lines link with all parts of the country.

## Huangshan City Gymnasium

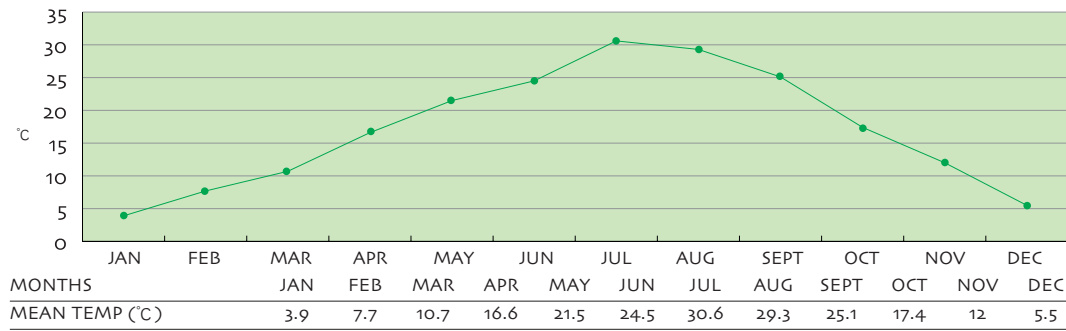
Facility for: Badminton

Facility description:

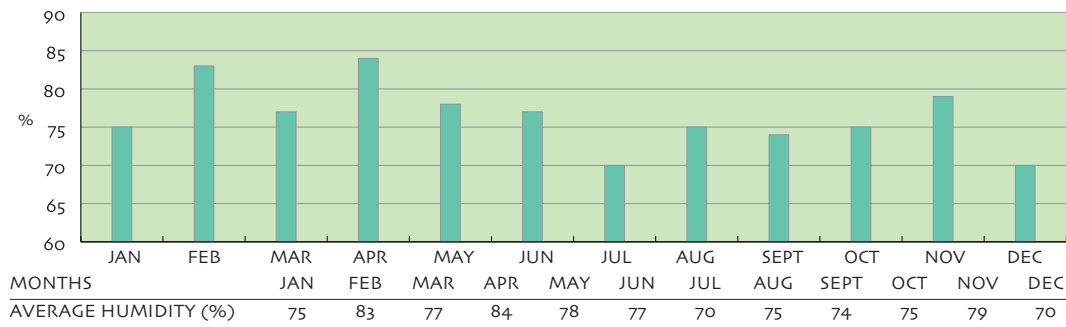
- 44m x 32m for six badminton courts
- Weight training room, changing rooms and toilets



● MEAN MONTHLY TEMP



● HUMIDITY



## WUHU

Area: 3,325 sq km

Population: 2 million

Longitude: 119°21'E Latitude: 31°20'N

Location: Southeast of Anhui Province, downstream area of the Yangtze River

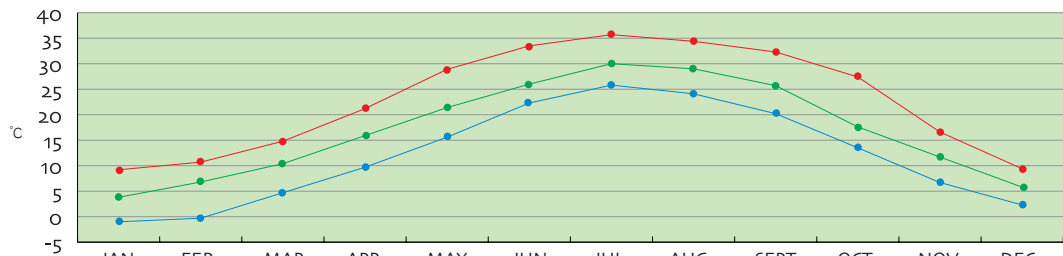
Climate:

Subtropical humid monsoon climate featuring plenty of sunshine, rich rainfall and four distinctive seasons.

- Average annual temperature: 15°C-16°C
- Annual sunshine: about 2,000 hours
- Annual precipitation: 1,200-1,400 mm
- Annual frost-free period: 219-240 days

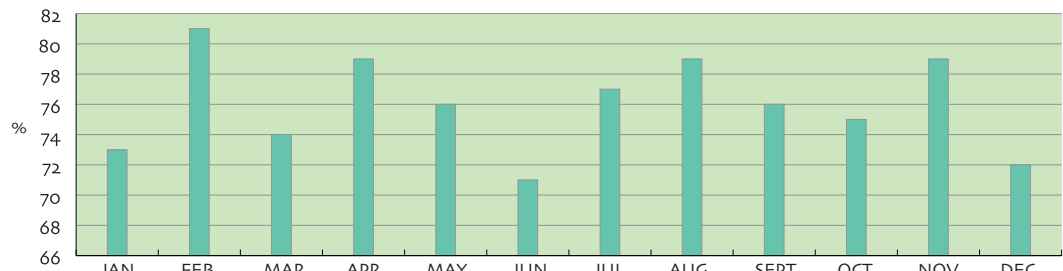
A modern city with a long history, Wuhu began as a treaty port in 1876. It has been noted as one of the four major rice markets in China.

● AVERAGE MAX TEMP ● MEAN MONTHLY TEMP ● AVERAGE MIN TEMP



MONTHS	JAN	FEB	MAR	APR	MAY	JUN	JUL	AUG	SEPT	OCT	NOV	DEC
AVERAGE MAX TEMP (°C)	9.2	10.7	14.8	21.2	28.9	33.5	35.7	34.4	32.3	27.4	16.6	9.4
MEAN TEMP (°C)	3.8	6.8	10.4	15.9	21.4	26	30	29	25.7	17.6	11.7	5.8
AVERAGE MIN TEMP (°C)	-1	-0.3	4.7	9.7	15.6	22.3	25.8	24.1	20.2	13.5	6.7	2.3

● HUMIDITY



MONTHS	JAN	FEB	MAR	APR	MAY	JUN	JUL	AUG	SEPT	OCT	NOV	DEC
AVERAGE HUMIDITY (%)	43.6	98.6	154.5	164.6	86.3	252.4	304.5	72	35	90	69	30.1



## Wuhu Aoyuan Shooting Range

Facility for: Shooting

Facility description:

- 10m shooting range with 40 shooting positions
- 10m running target range with 4 groups of targets
- 25m range with 12 groups of targets
- 50m range with 42 groups of targets
- Weight training room, changing rooms and toilets



## YUEXI

Area: 2,398 sq km

Population: 401,000

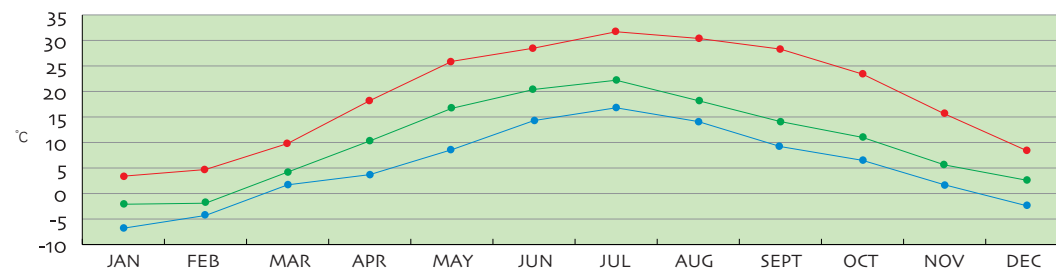
Longitude: 115°50'-116°33'E Latitude: 30°39'- 31°11'N

Location: Center of Dabieshan Mountain, southwest of Anhui Province

Climate: Cool summer, with highest temperature standing below 32°C.

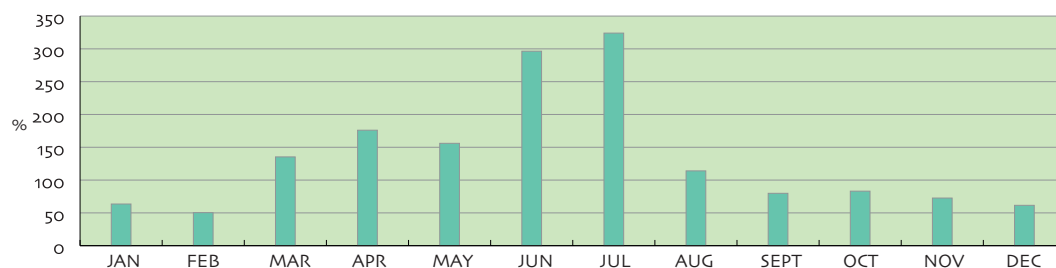
Yuexi is noted for its Miaodaoshan State Forest Park and Yaoluoping State Nature Reserve. Tourist attractions include the Tianxianhe River drifting and Zhifeng Canyon.

● AVERAGE MAX TEMP ● MEAN MONTHLY TEMP ● AVERAGE MIN TEMP

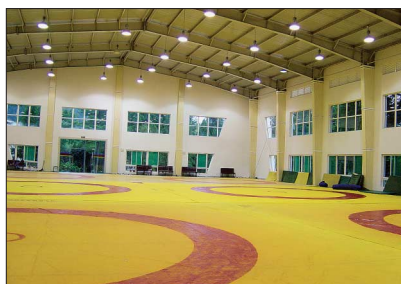


MONTHS	JAN	FEB	MAR	APR	MAY	JUN	JUL	AUG	SEPT	OCT	NOV	DEC
AVERAGE MAX TEMP (°C)	3.4	4.7	9.8	18.2	25.9	28.5	31.7	30.4	28.3	23.4	15.6	8.4
MEAN TEMP (°C)	-2.1	-1.9	4.2	10.3	16.7	20.4	22.2	18.2	14.1	11	5.6	2.6
AVERAGE MIN TEMP (°C)	-6.8	-4.3	1.7	3.7	8.6	14.3	16.8	14.1	9.2	6.5	1.7	-2.4

● HUMIDITY



MONTHS	JAN	FEB	MAR	APR	MAY	JUN	JUL	AUG	SEPT	OCT	NOV	DEC
AVERAGE HUMIDITY (%)	63.5	50.3	135.3	176	156	296.4	324	114	79.8	83.1	72.6	61.5



Interior of wrestling hall

## Shiguan Training Center

Facilities for: Wrestling and weightlifting

Facility description:

- 45m x 27m wrestling hall with four standard mats
- 35m x 15m weightlifting hall with 16 sets of weightlifting equipment
- Weight training room, changing rooms and toilets